



A HOME FIT FOR YOU

# FLOORPLANS

3-BEDROOM



# 3-BEDROOM + STUDY

## TYPE CS1

100 SQM / 1076 SQFT

### BLK 10

#02-13 to #05-13,  
#09-13 to #10-13  
#03-26\* to #10-26\*

### BLK 20

#02-47 to #04-47  
#02-60\* to #04-60\*

## TYPE CS1-P

100 SQM / 1076 SQFT

### BLK 10

#01-13

### BLK 20

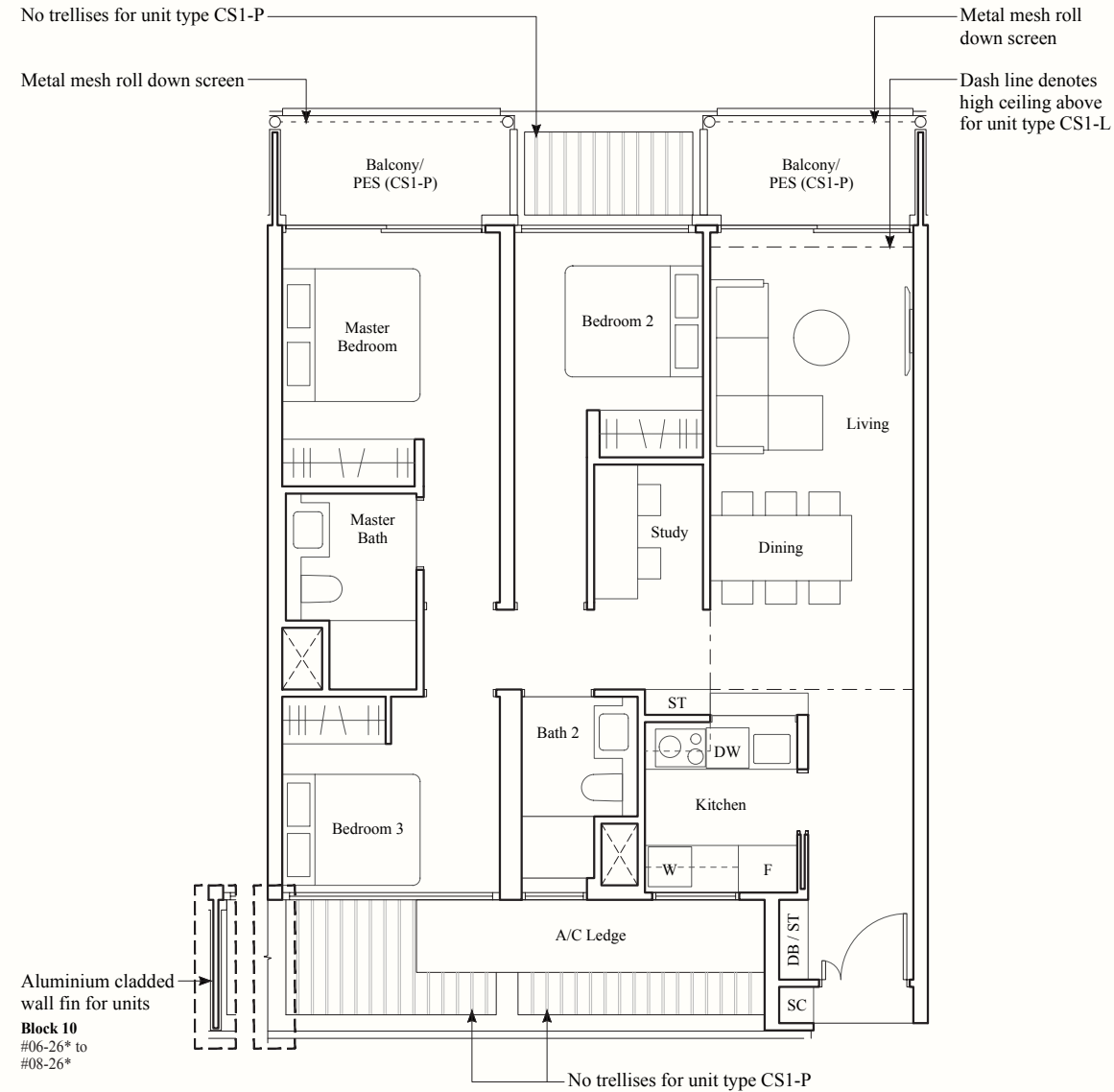
#01-47, #01-60\*

## TYPE CS1-L

119 SQM / 1281 SQFT

### BLK 20

#05-47, #05-60\*



# 3-BEDROOM PREMIUM

## TYPE CP1

113 SQM / 1216 SQFT

### BLK 10

#02-14 to #05-14,  
#09-14 to #10-14  
#03-25\* to #10-25\*

### BLK 20

#02-48 to #04-48  
#02-59\* to #04-59\*

## TYPE CP1-P

113 SQM / 1216 SQFT

### BLK 10

#01-14

### BLK 20

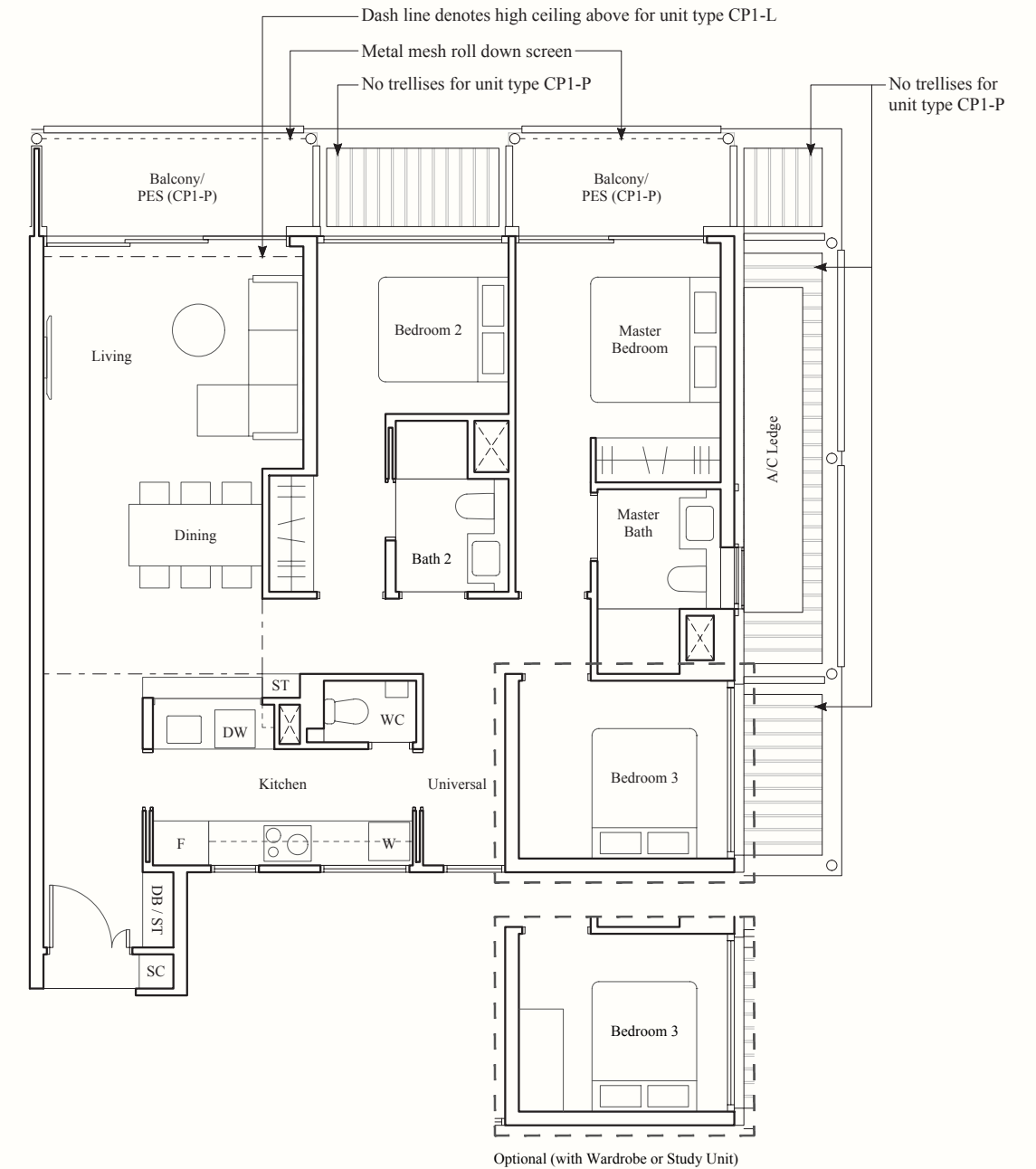
#01-48, #01-59\*

## TYPE CP1-L

136 SQM / 1464 SQFT

### BLK 20

#05-48, #05-59\*

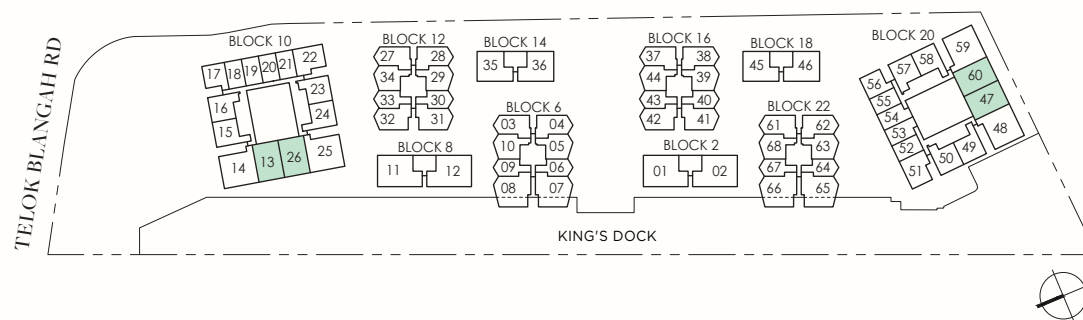


0.5 1 2 3 5m

HARBOURFRONT AVE

F: Fridge  
W: Washing Machine-cum-Dryer  
DB: Distribution Board  
DW: Dishwasher  
SC: Shoe Cabinet  
ST: Storage

\* Denotes mirror image



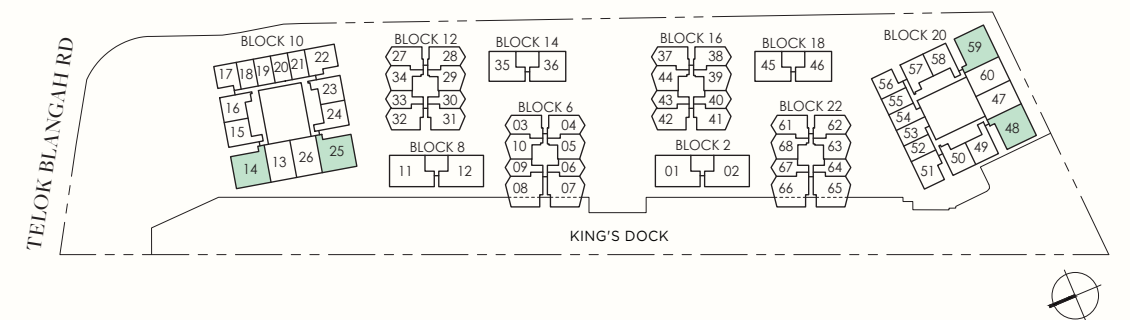
AREA INCLUDES AIR-CON (A/C) LEDGE, BALCONY, PRIVATE ENCLOSED SPACE (PES) AND STRATA VOID AREA WHERE APPLICABLE. SOME UNITS ARE MIRROR IMAGES OF THE PLAN SHOWN IN THE BROCHURE. PLEASE REFER TO THE KEY PLAN FOR ORIENTATION. THE PLANS ARE SUBJECT TO CHANGE AS MAY BE REQUIRED BY THE RELEVANT AUTHORITIES. ALL MEASUREMENTS ARE APPROXIMATE ONLY AND ARE SUBJECT TO GOVERNMENT RE-SURVEY. THE BALCONY SHALL NOT BE ENCLOSED UNLESS WITH THE APPROVED BALCONY SCREEN.

0.5 1 2 3 5m

HARBOURFRONT AVE

F: Fridge  
W: Washing Machine-cum-Dryer  
DB: Distribution Board  
DW: Dishwasher  
SC: Shoe Cabinet  
ST: Storage

\* Denotes mirror image



AREA INCLUDES AIR-CON (A/C) LEDGE, BALCONY, PRIVATE ENCLOSED SPACE (PES) AND STRATA VOID AREA WHERE APPLICABLE. SOME UNITS ARE MIRROR IMAGES OF THE PLAN SHOWN IN THE BROCHURE. PLEASE REFER TO THE KEY PLAN FOR ORIENTATION. THE PLANS ARE SUBJECT TO CHANGE AS MAY BE REQUIRED BY THE RELEVANT AUTHORITIES. ALL MEASUREMENTS ARE APPROXIMATE ONLY AND ARE SUBJECT TO GOVERNMENT RE-SURVEY. THE BALCONY SHALL NOT BE ENCLOSED UNLESS WITH THE APPROVED BALCONY SCREEN.

# 3-BEDROOM PREMIUM

## TYPE CP2

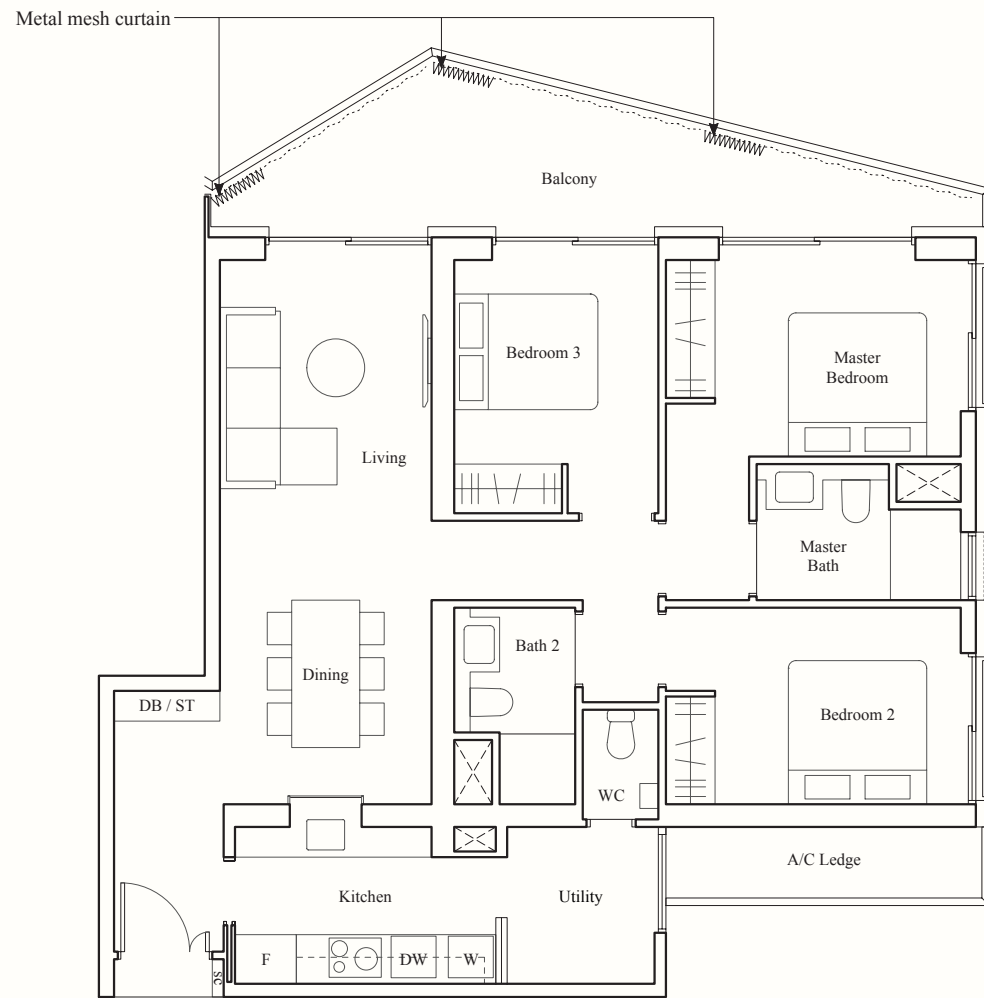
116 SQM / 1249 SQFT

### BLK 6

#03-07 to #08-07  
#03-08\* to #08-08\*

### BLK 22

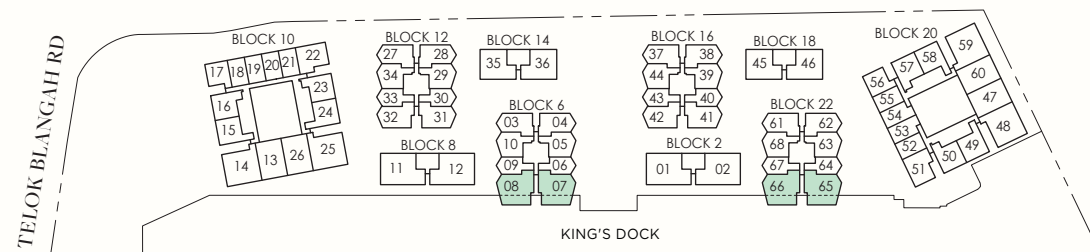
#03-65 to #07-65  
#03-66\* to #07-66\*



HARBOURFRONT AVE

F: Fridge  
W: Washing Machine-cum-Dryer  
DB: Distribution Board  
DW: Dishwasher  
SC: Shoe Cabinet  
ST: Storage

\* Denotes mirror image



AREA INCLUDES AIR-CON (A/C) LEDGE, BALCONY, PRIVATE ENCLOSED SPACE (PES) AND STRATA VOID AREA WHERE APPLICABLE. SOME UNITS ARE MIRROR IMAGES OF THE PLAN SHOWN IN THE BROCHURE. PLEASE REFER TO THE KEY PLAN FOR ORIENTATION. THE PLANS ARE SUBJECT TO CHANGE AS MAY BE REQUIRED BY THE RELEVANT AUTHORITIES. ALL MEASUREMENTS ARE APPROXIMATE ONLY AND ARE SUBJECT TO GOVERNMENT RE-SURVEY. THE BALCONY SHALL NOT BE ENCLOSED UNLESS WITH THE APPROVED BALCONY SCREEN.

# 3-BEDROOM VILLA

## TYPE CV1-P

125 SQM / 1345 SQFT

### BLK 2

#01-01, #01-02\*

### BLK 8

#01-11, #01-12\*

## TYPE CV1-L

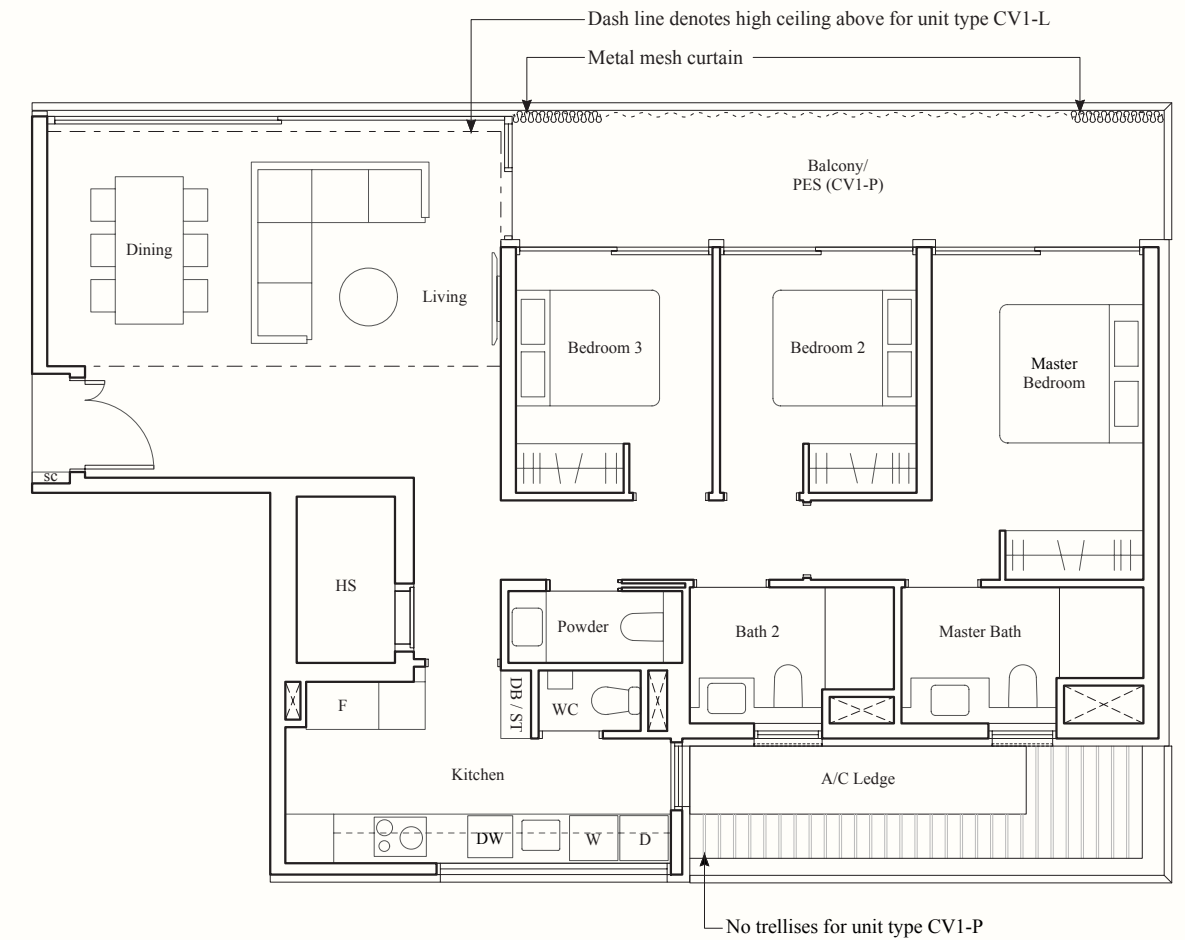
146 SQM / 1572 SQFT

### BLK 2

#02-01, #02-02\*

### BLK 8

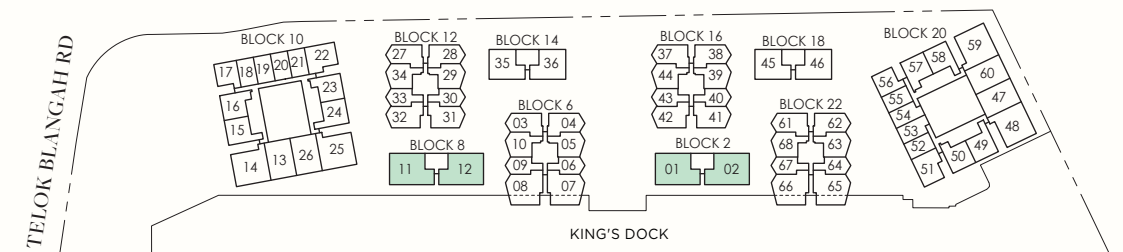
#02-11, #02-12\*



HARBOURFRONT AVE

F: Fridge  
W: Washing Machine  
D: Dryer  
DB: Distribution Board  
DW: Dishwasher  
SC: Shoe Cabinet  
ST: Storage

\* Denotes mirror image



AREA INCLUDES AIR-CON (A/C) LEDGE, BALCONY, PRIVATE ENCLOSED SPACE (PES) AND STRATA VOID AREA WHERE APPLICABLE. SOME UNITS ARE MIRROR IMAGES OF THE PLAN SHOWN IN THE BROCHURE. PLEASE REFER TO THE KEY PLAN FOR ORIENTATION. THE PLANS ARE SUBJECT TO CHANGE AS MAY BE REQUIRED BY THE RELEVANT AUTHORITIES. ALL MEASUREMENTS ARE APPROXIMATE ONLY AND ARE SUBJECT TO GOVERNMENT RE-SURVEY. THE BALCONY SHALL NOT BE ENCLOSED UNLESS WITH THE APPROVED BALCONY SCREEN.